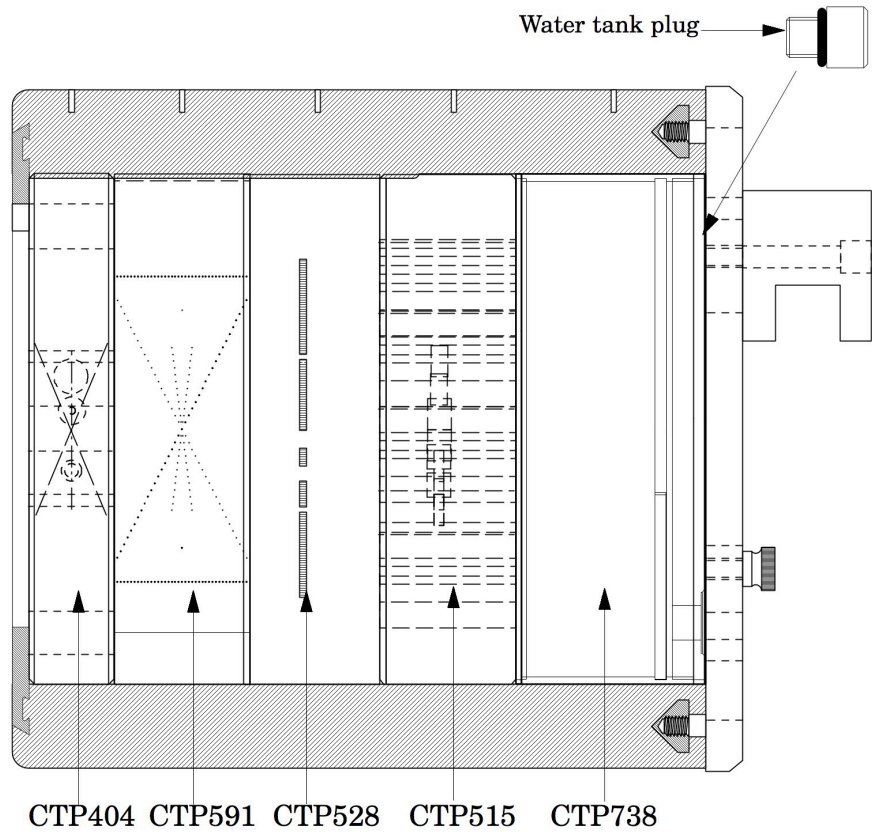


part number
CTP608

page 1 of 1



Catphan® 608

The Catphan® 608 phantom has the same test modules as the Catphan® 600 except for the CTP486 uniformity module is replaced with the CTP738 water tank. In addition the mounting plate is modified to accommodate access to the water tank fill plug.

The CTP738 water tank is manufactured from polycarbonate plastic. The tank has a built in bubble wall allowing air to be trapped at the end of the tank away from the uniform measurement area. Leaving some air in the tank enables the water to expand or contract within the tank.

For greater detail on the test modules contained in this phantom look for technical information and manuals for the Catphan® 600 phantom. A pdf version of the manual can be downloaded from our website: phantomlab.com



The Phantom Laboratory

phone
800-525-1190 or 518-692-1190
fax
518-692-3329

mail
P.O. Box 511
Salem, New York 12865
shipping
2727 State Route 29
Greenwich, New York 12834

email
info@phantomlab.com
web
www.phantomlab.com