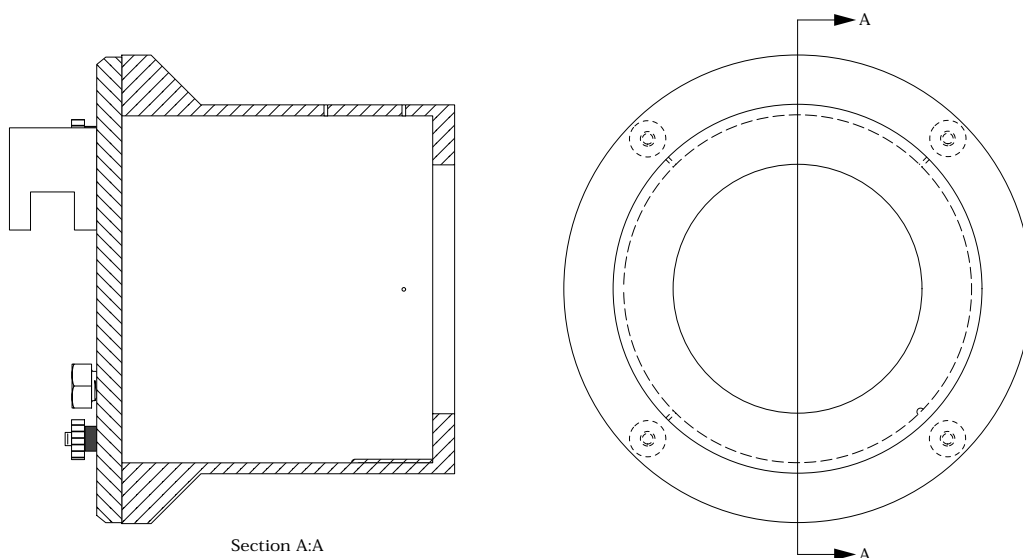


part number  
CTP541

page 1 of 1



## 16cm Catphan® Housing

The 16cm Catphan® housing is supplied with a Catphan® mounting bracket enabling it to be mounted off the standard Catphan® carrying case. The housing is cast from a urethane material with a CT number of  $0H \pm 5H$ .

The 16cm housing only has 13.5cm of internal capacity in contrast to the 20cm diameter Catphan® housing which has 17.5cm of internal capacity. Due to the smaller capacity of the 16cm housing the modules contained in a Catphan® 500, 412 or 424 will not all fit in the 16cm housing at the same time.



## The Phantom Laboratory

**phone**  
800-525-1190 or 518-692-1190  
**fax**  
518-692-3329

**mail**  
P.O. Box 511  
Salem, New York 12865  
**shipping**  
2727 State Route 29  
Greenwich, New York 12834

**email**  
[info@phantomlab.com](mailto:info@phantomlab.com)  
**web**  
[www.phantomlab.com](http://www.phantomlab.com)