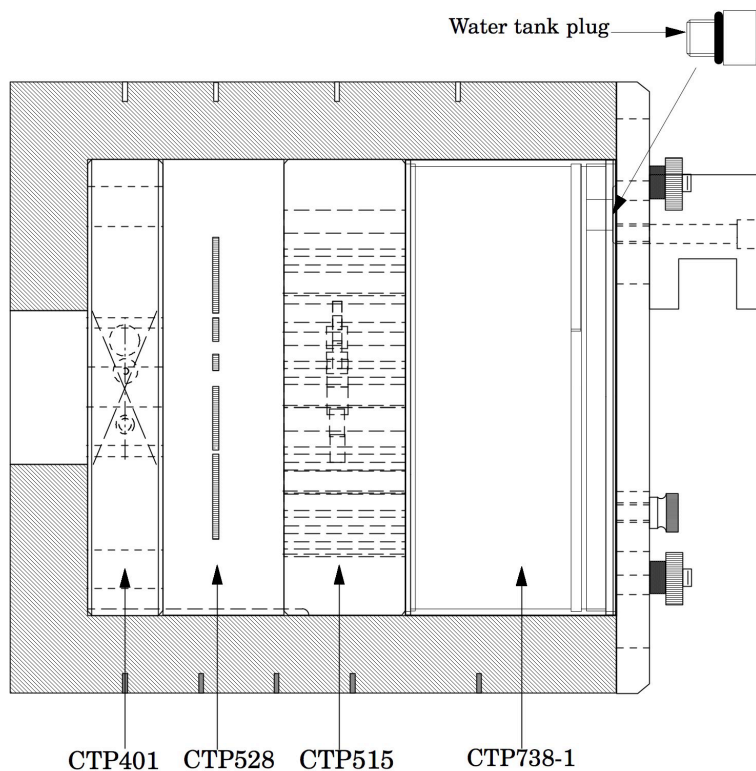


part number  
**CTP508**

page 1 of 1



## Catphan® 508

The Catphan® 508 phantom has the same test modules as the Catphan® 500 except for the CTP486 uniformity module is replaced with the CTP738-1 water tank. In addition the mounting plate is modified to accommodate access to the water tank fill plug.

The CTP738-1 water tank is manufactured from polycarbonate plastic. The tank has a built in bubble wall allowing air to be trapped at the end of the tank away from the uniform measurement area. Leaving some air in the tank enables the water to expand or contract within the tank.

For greater detail on the test modules contained in this phantom please review technical information and manuals for the Catphan® 500 phantom. If you would like a pdf version, it can be downloaded from our website: [phantomlab.com](http://phantomlab.com)