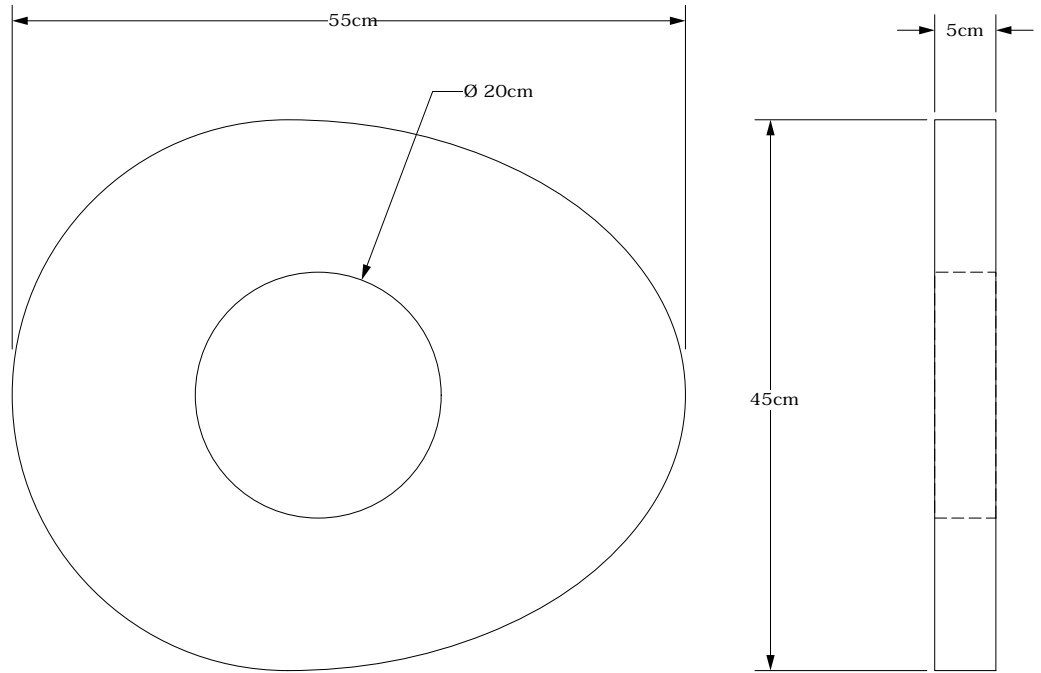


**part number**  
**CTP599**

page 1 of 1



### 45-55cm Oval OD Uniformity Material Body Annulus, CTP599

The 45-55cm oval OD annulus can be slid over a 20cm Catphan® housing to mimic a very large body's imaging attenuation. The egg-shaped off-center annulus is cast from our uniformity material that is within 2% (0-20H) of water density.



## The Phantom Laboratory

**phone**  
800-525-1190 or 518-692-1190  
**fax**  
518-692-3329

**mail**  
P.O. Box 511  
Salem, New York 12865  
**shipping**  
2727 State Route 29  
Greenwich, New York 12834

**email**  
info@phantomlab.com  
**web**  
www.phantomlab.com